



ALULIFT[®] Portable Aluminum Gantry Crane Operation & Maintenance Instructions



CONTENTS

Caution 3

Pre-Build Check List..... 4

Initial Set Up..... 5-6

Assembly Instructions 6-8

Adjusting the Height..... 9

Moving The Gantry Under Load..... 10

Maintenance Instructions..... 10

Parts List 11

Warranty 12



IMPORTANT

Before assembly or operation of this gantry, please read these instructions carefully.

- **ENSURE** no parts are missing or damaged. A full list of required parts can be found on Page 10 of this manual and a Pre-Build Check List is on Page 4
- **DO NOT** use to lift or support a person
- **CHECK** that the rated capacity is clearly marked on each side of the lifting beam
- **DO NOT** lift more than the rated capacity
- **DO NOT** adjust height whilst gantry is under load
- **DO NOT** push or pull unit with a forklift truck or other type of vehicle
- **DO NOT** allow the load to swing or roll against support members
- **SECURE** trolley and hoist in center of Beam when adjusting height
- **BEFORE LIFTING** ensure load is not attached to the floor, remove any obstacles that would impede the lift
- **CARE** should be taken if it becomes necessary to move the gantry under load, we recommend that you adhere to procedure for this operation, outlined in this manual

PRE-BUILD CHECK LIST

1 x Beam



2 x Upright Assemblies



2 x Leg Kits



6 x Loop Pins



4 x Wheel Assemblies



1 x Hoist Trolley



INITIAL SET UP (Should only have to be done once)

Building The A-Frame's

Step 01

Place the Upright Assembly on the floor as shown in **Fig 01**

Align the angled length to the bottom pre-drilled hole of the top plate as shown in **Fig 02**

Bolt together using the supplied fixings as shown in **Fig 03**



Fig 01



Fig 02



Fig 03

Step 02

Using the supplied fixing, attach the Castors to the bottom of each leg ensuring that the brakes are facing outside as shown in **Fig 04**



Fig 04

Step 03

Turn the Leg Assembly onto it's side to allow easy insertion of the Upright Assembly and pin together through the top pre-drilled hole using the supplied Loop Pins as shown in **Fig 05**

Ensure the Pin is kept in place by using the supplied clip as shown in **Fig 06**

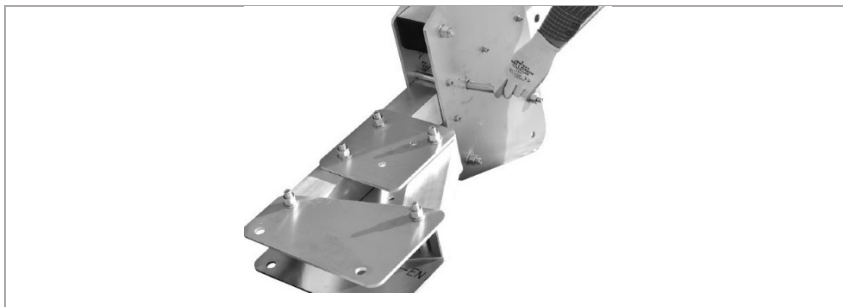


Fig 05



Fig 06

ASSEMBLY INSTRUCTIONS

Before assembling the gantry, please ensure that there is no machinery or equipment which could impede the assembly operation. **ALL** personnel should wear appropriate safety gear, such as hard hats, safety shoes and gloves.

Step 01

Place the A-Frames on the floor with the top plate facing to the side as shown in **Fig 07**.

Fully extend the legs on the A-Frame ready for use.

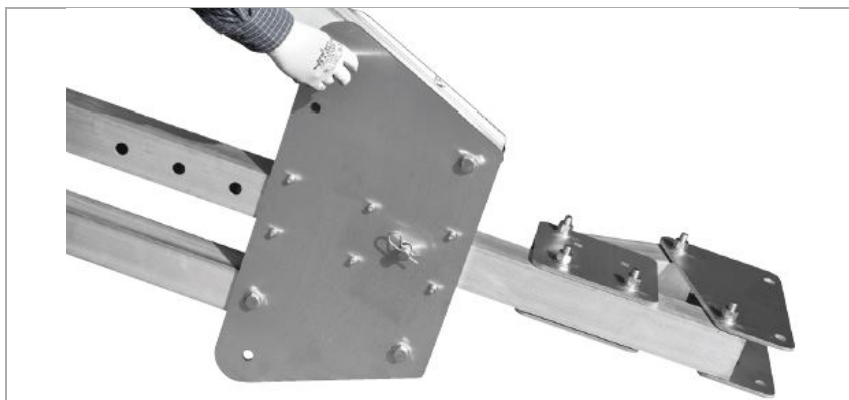


Fig 07

Step 02

Locate one end of the Beam inside the top plate of the A-Frame as shown in **Fig 08**
At the other end of the Beam slide the Hoist Trolley inside the track profile.

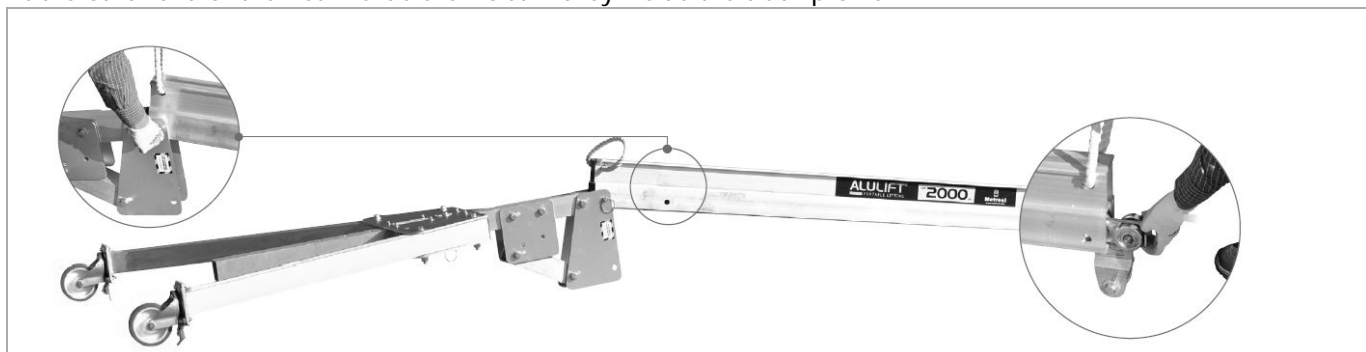


Fig 08

Step 03

Locate the opposite end of the Horizontal Lifting Beam inside the top plate of the A-Frame as shown in **Fig 09** (As per Step 02 – but opposite side)



Fig 09

Step 04

Engage the brakes on both castors at the end opposite to the first lift as shown in **Fig 10**. This is to ensure the A-Frame will not move when raising the beam.



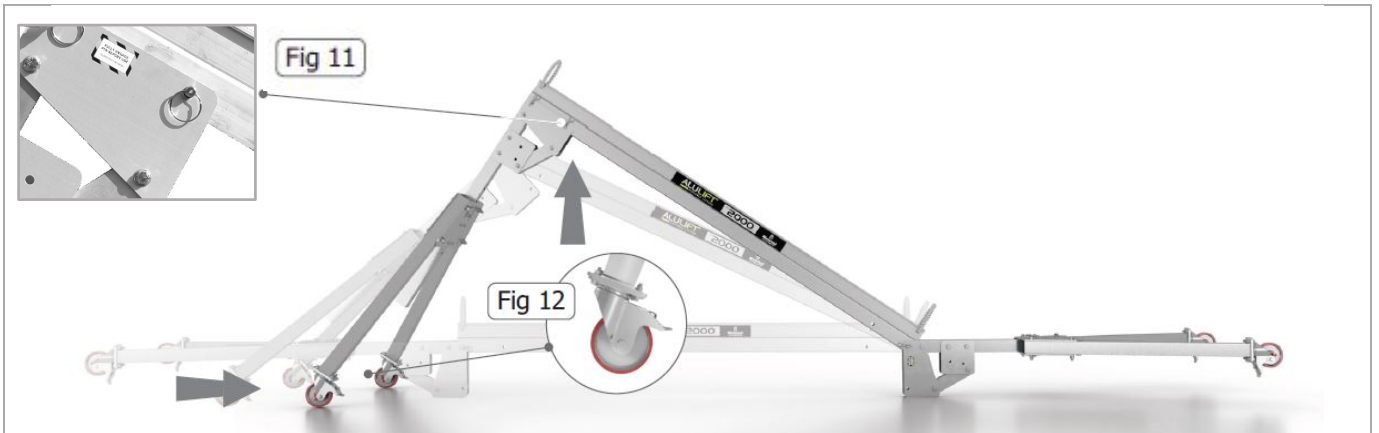
Fig 10

Step 05

With one person holding the beam, another person should raise the A-Frame slowly by wheeling the legs into the upright position.

At a point of 90° to the beam, use the locking pin, shown in **Fig 11**

Engage brakes on castors as shown in **Fig 12**

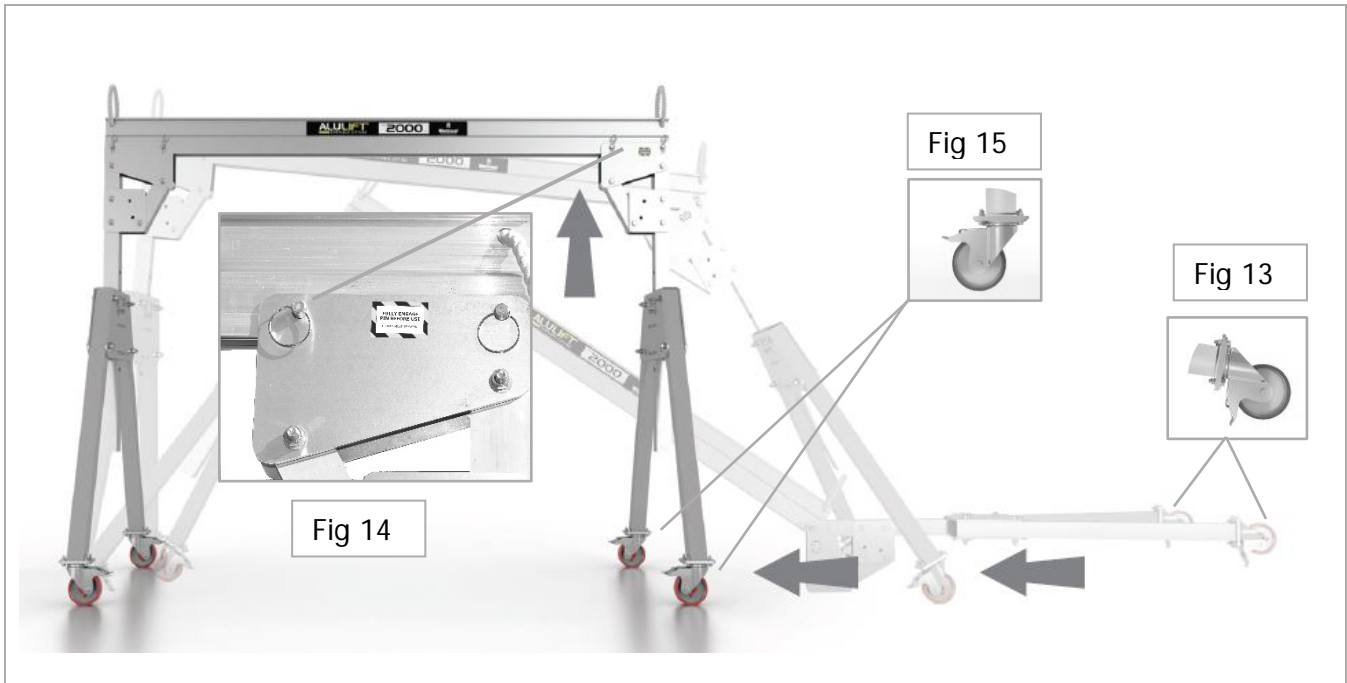


Step 06

Release brakes on castors, **Fig 13** and raise the other A-Frame similarly with one person holding the main beam, whilst another person raises the A-Frame slowly by wheeling the legs into the upright position.

At a point of 90° to the beam, use the locking pin, shown in **Fig 14** to secure the A-Frame in it's vertical position.

Engage brakes on castors as shown in **Fig 15**

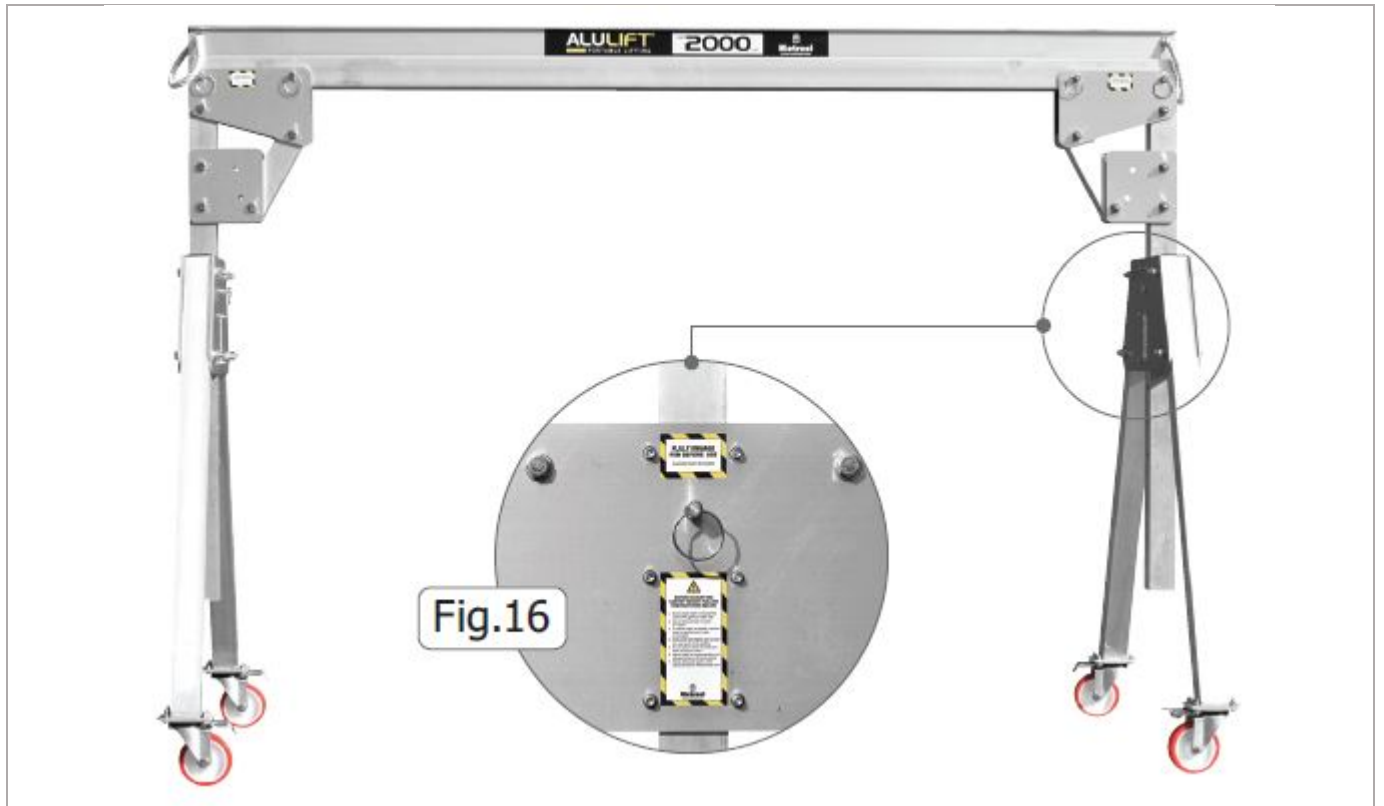


ADJUSTING THE HEIGHT

First secure the trolley and hoist to one of the Gantry A-Frames, preventing movement along the Beam.

We advise that you should only raise/lower one end at a time and that you do not raise/lower more than 2 height increments in any one movement.

To raise or lower the beam, first ensure that the upright leg is held to prevent it from dropping. Release the locking pin (as shown in **Fig 16**) and raise or lower the leg until the next 1 or 2 holes align. Re-insert the locking pin and secure. Repeat until the correct height has been achieved.



MOVING THE GANTRY UNDER LOAD

Under certain circumstances it is possible to use the gantry to transport the load. This should **ONLY** be carried out if the ground towards the destination is level, sound surface and two or more people are present.

We would also advise that you follow this procedure when moving the gantry.

1. With Castor Brakes engaged, raise the load to just above ground level (Max. 6" clearance)
2. Secure the trolley and load to one end of the A-Frame
3. Release Castor Brakes
4. From the other end, drag the gantry slowly to your destination point
5. Engage Castor Brakes
6. You can now untie the load and reuse as required

MAINTENANCE INSTRUCTIONS

To ensure the safe operation of your gantry, periodically inspect it for bent, broken, damaged, corroded, cracked or missing parts.

If replacements part are required, please supply the complete gantry model and serial number both of which can be found on the aluminum plate fixed to one of the A-Frame bases. Please also identify from the parts list drawing (page 11) which item is required.

The only item which requires regular maintenance is to check the tightness of bolts and to lubricate the casters through the grease nipple provided.

Should the Castors require lubrication we recommend NLGI No. 1 or No. 2 grease to be used.

Safety instruction labels and part identification codes should be in a legible condition at all times. If these become lost or damaged we would recommend that you contact your supplier and request new labels.



PARTS LIST & DRAWING

Parts List	
1	Lifting Beam
2	Safe Working Load Plates
3	Top Plate
4	Upright Assembly
5	Leg Kit
6	Loop Pins
7	Hoist Trolley
8	Wheels (braked)

WARRANTY

The 10 year warranty covers

- Defects in equipment, material and workmanship

Metreel Inc. warrants its **ALULIFT**[®] Portable Gantry Crane product to be free from defects in material and workmanship for a period of ten years commencing on the date of shipment to the first retail purchaser.

This warranty extends to non-wearable parts only, with the exception of the wheels supplied on the hoist trolley. This warranty does not cover defective equipment or system failure caused by misuse, negligence, improper installation / maintenance or equipment that has been in excess of its rated capacity or beyond its service factors. It does not apply to equipment that has been altered without Metreel Inc.'s written authorization.

Written notice of any claimed system defect must be given to Metreel Inc.'s within thirty days of discovery. Metreel Inc.'s obligation under this warranty is limited to the replacement or repair of Metreel Inc.'s products at the factory or separate location approved by Metreel Inc. The purchaser is responsible for all freight and transportation costs relating to equipment repair or replacement. **Other than the above-mentioned warranty, Metreel Inc. will not honor any other warranties – whether express, implied or statutory – and disclaims any warranties of merchantability or fitness for a particular purpose. Metreel Inc. is not liable – under any circumstances – for any indirect, incidental, or consequential damages including but not limited to lost profits, increased operating costs or loss of production.**

This warranty does not extend to components or accessories not manufactured by Metreel Inc. The purchaser's remedy for such components and accessories will be determined by the terms and conditions of any warranty provided by the manufacturer of such components and accessories.